



## Connectivity solutions for machines

*Products for machine communication supporting CAN and all common fieldbus and industrial Ethernet standards.*



## Solutions for automotive testing

*Powerful tools and hardware platforms for automotive testing – both, for test benches and vehicles under test.*



## Smart Grid Solutions

*IXXAT SG-gateways for linking special energy protocols – used in energy, gas, water and railway power systems – with fieldbus and industrial Ethernet.*



## Functional safety for industrial devices



*IXXAT Safe is one of the industry's most comprehensive product offerings for integrating safe communication solutions.*

## CAN INTERFACES



*Connect a PC or embedded System to CAN and CAN FD.*

[➔ Product Overview](#)

## BRIDGES & GATEWAYS



*Flexible networking and system access.*

[➔ Product Overview](#)

## CAN REPEATERS



*Increase system reliability and save wiring costs.*

[➔ Product Overview](#)

## MULTI-PROTOCOL PC INTERFACES



*Connect your PC to various fieldbus and industrial Ethernet standards.*

[➔ Product Overview](#)

## CAN/CANOPEN PLC EXTENSIONS

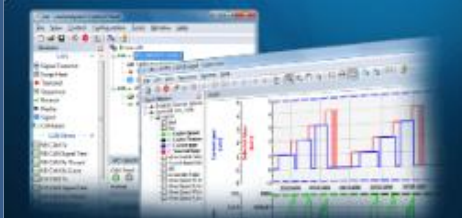


*Connect CANopen devices to Siemens SIMATIC PLCs.*

[➔ Product Overview](#)



## ANALYSIS AND CONFIGURATION



*System stimulation, configuration and analysis.*

[!\[\]\(666e09182d4cd268646ea700ea60dcdf\_img.jpg\) Product Overview](#)

## PROTOCOL STACKS AND API



*Implement various higher layer protocols.*

[!\[\]\(003082e50e3009141f59bd5df831749f\_img.jpg\) Product Overview](#)

## TIME SYNCHRONIZATION



*Precise synchronization with IXXAT IEEE 1588 solutions.*

[!\[\]\(d3102649f02e825ddb76dc3de0190154\_img.jpg\) Product Overview](#)

## IO MODULES



*Easily connect analog and digital signals.*

[!\[\]\(4f6bf54ae7e4144a72d78316053e412d\_img.jpg\) Product Overview](#)

## EMBEDDED CONTROLLER



*Control machines within several networks.*

[!\[\]\(19d44b37fb4fa155bf9d60c77a3d3cb2\_img.jpg\) Product Overview](#)

## CAN, CAN-FD, FLEXRAY AND LIN INTERFACES



*PC-based or embedded  
applications analysis.*

[!\[\]\(99f58673407353e96a019fbca558fd72\_img.jpg\) Product Overview](#)

## REPEATER, BRIDGES, GW, IO MODULES



*simplify networking, increase  
reliability*

[!\[\]\(de95854c7ee024cfadc48187bbb781b2\_img.jpg\) Product Overview](#)

## ANALYSIS AND DIAGNOSIS TOOLS



*for CAN-based, CAN FD and  
LIN systems*

[!\[\]\(6a9b39b98eb945faa14c645ec99e4eaa\_img.jpg\) Product Overview](#)

## PROTOCOL SOFTWARE AND APIS



*for implementing SAE J1939  
and CANopen*

[!\[\]\(f1c5da15572e3e09d343161be98f508d\_img.jpg\) Product Overview](#)

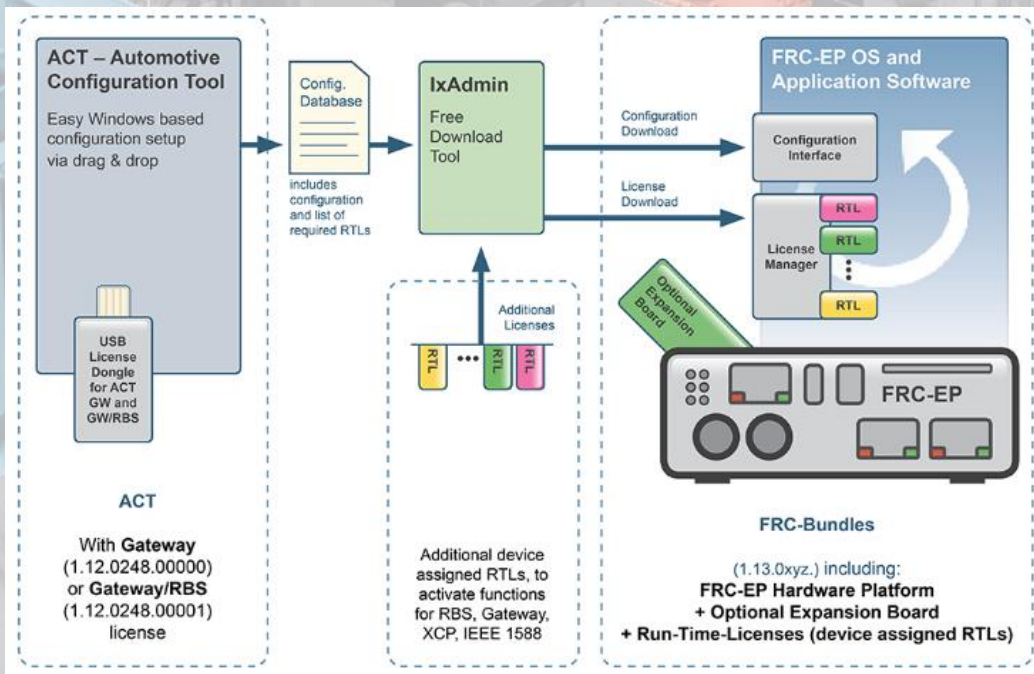




## ACT and the Embedded Platform

form the basis for a variety of solutions. Learn more about the hardware and interfaces under Embedded Platform and about the applications under ACT tool.

## LICENSE AND BUNDLE MODEL FOR THE FRC-EP SERIES AND THE ACT TOOL



## EMBEDDED PLATFORM



The Embedded Platform forms the basis for manifold testing and analysis applications – both, with IXXAT ACT tools as well as with customer-specific software solutions.

[Product Overview](#)

## AUTOMOTIVE CONFIGURATION TOOL



The Automotive Configuration Tool (ACT) is a powerful, yet very easy to use PC software with versatile functions and possibilities.

[Product Overview](#)

## EtherNet/IP™



*IXXAT  
SG-gateway  
with EtherNet/IP  
Interface*

[➔ Product Overview](#)

## I/O



*IXXAT  
SG-gateway  
with IO  
Interface*

[➔ Product Overview](#)

## M-Bus



*IXXAT SG-  
gateway with  
M-Bus  
Master*

[➔ Product Overview](#)

## PROFI<sup>®</sup> BUS



*IXXAT SG-  
gateway with  
PROFIBUS  
Interface*

[➔ Product Overview](#)

## PROFI<sup>®</sup> NET

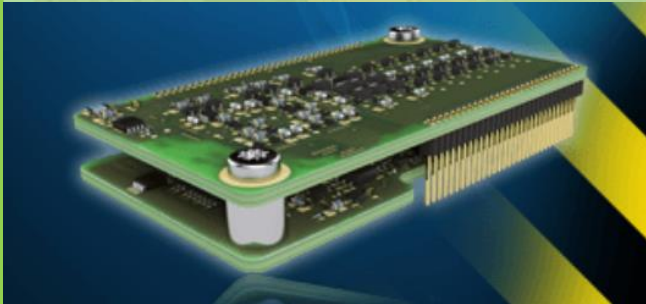


*IXXAT SG-  
gateway with  
PROFINET  
Interface*

[➔ Product Overview](#)



## IXXAT SAFE T100



*A module for quick and easy implementation of safe IOs*

- Supports PROFIsafe and CIP Safety
- Used together with Anybus CompactCom series
- Up to SIL3 or Performance Level PLe/Category 4
- TÜV certified

[➔ Product Overview](#)

## SAFETY PROTOCOL STACKS



*Flexible protocol stacks for implementing safety communication*

- Modular design enables perfect adaptation
- Easy implementation and certification
- Developed according to IEC 61508:2010 for applications up to SIL3 or Performance Level PLe

[➔ Product Overview](#)

# Thank You

